

# SUTURE

Group 1: Achmed Al-Tamimi, Anna Sordyl, Carmen Leon







Land owned by the municipality.

Land owned by Lefier Housing Corporation.

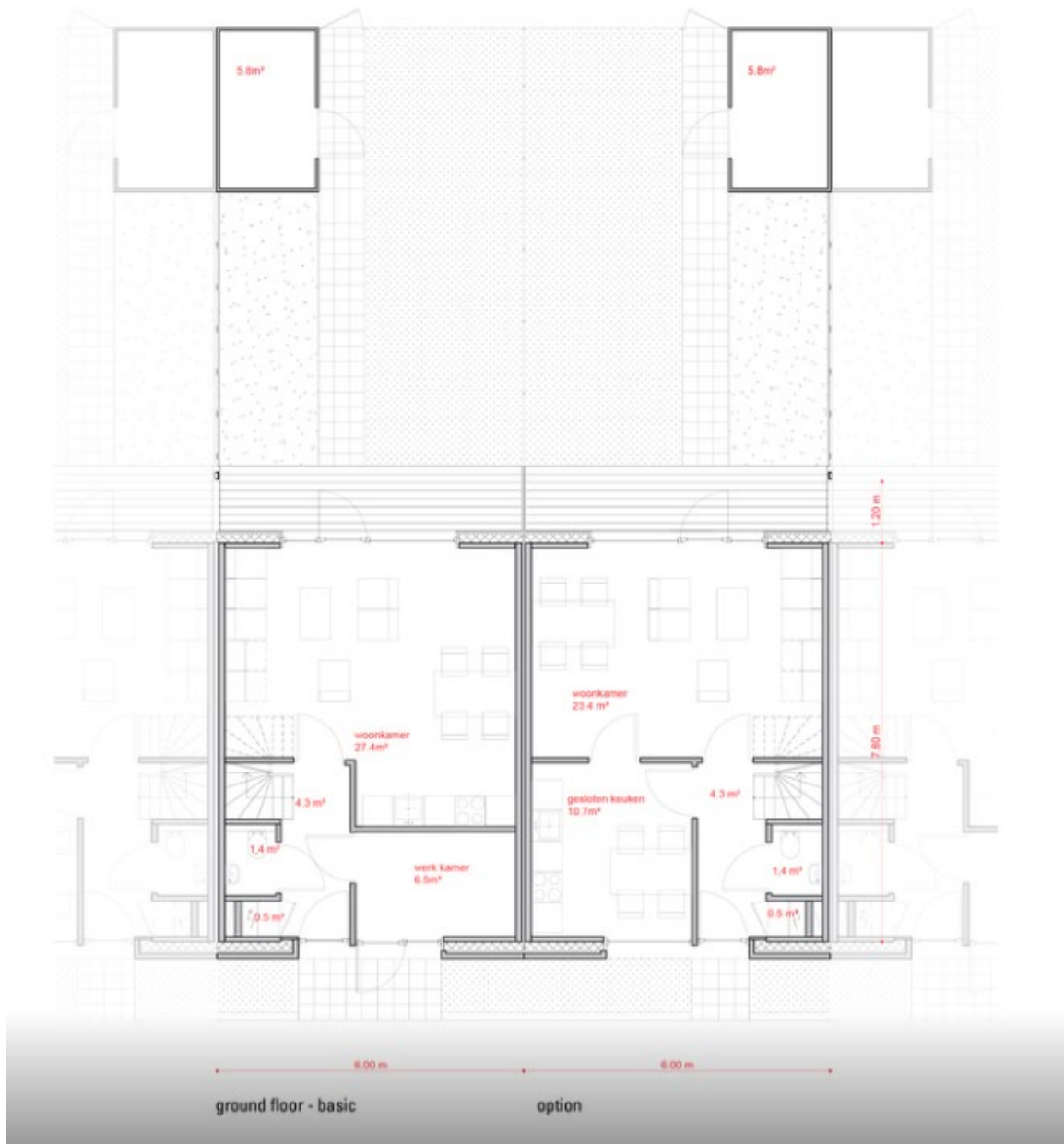


Entrance facade



Garden facade





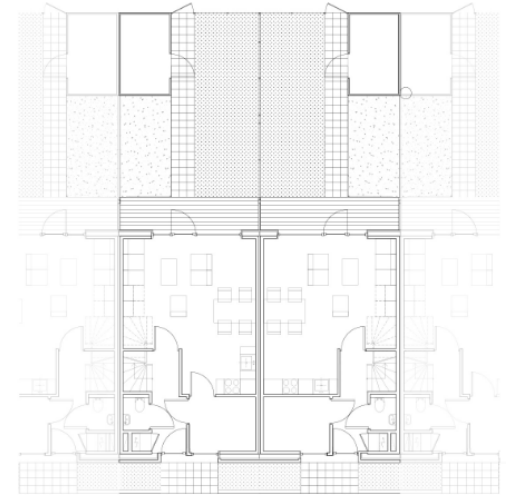




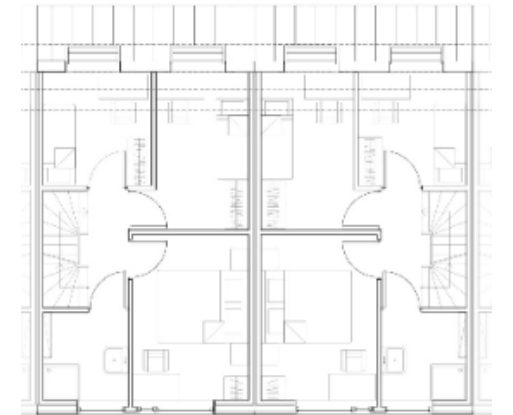


# Standards in the Netherlands

- 0,9 dm<sup>3</sup>/s per m<sup>2</sup>      7 dm<sup>3</sup>/s minimum living space





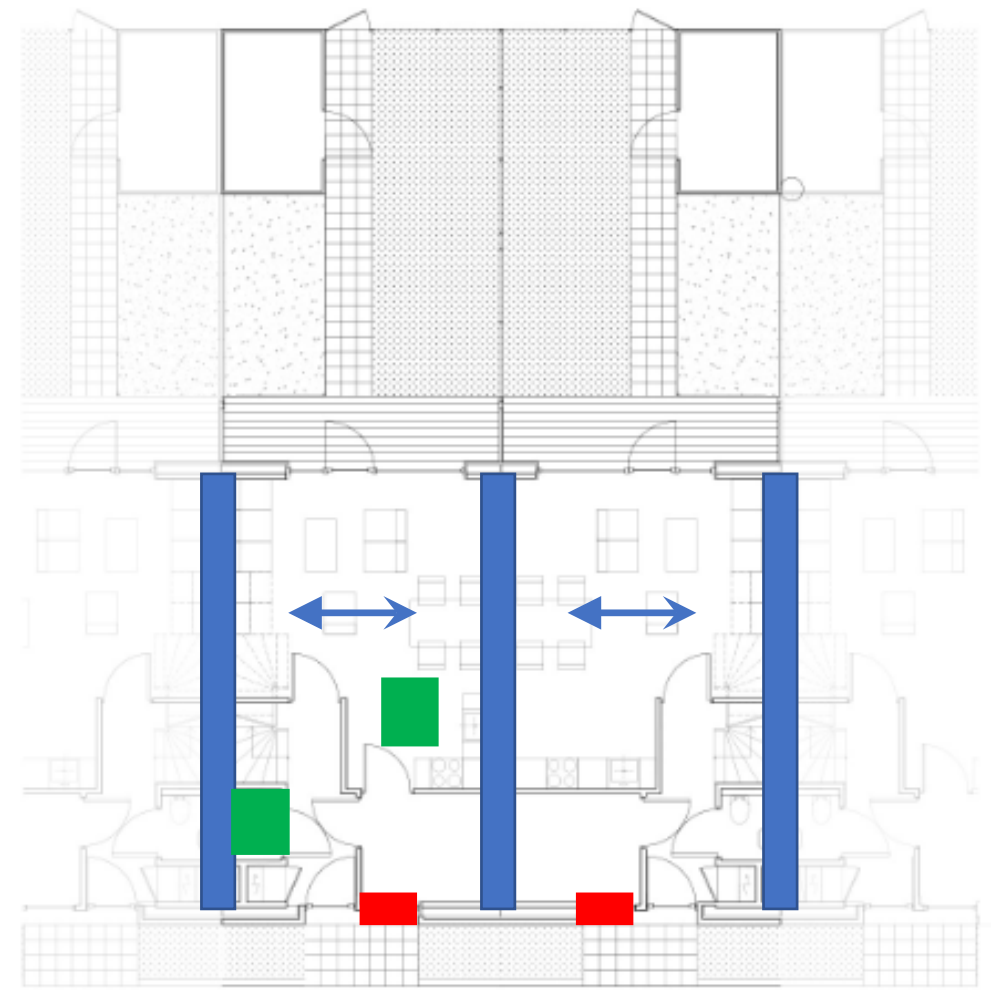
- 0,7 dm<sup>3</sup>/s per m<sup>2</sup>      7 dm<sup>3</sup>/s minimum living area



# First floor

Construction 

Ventilation   


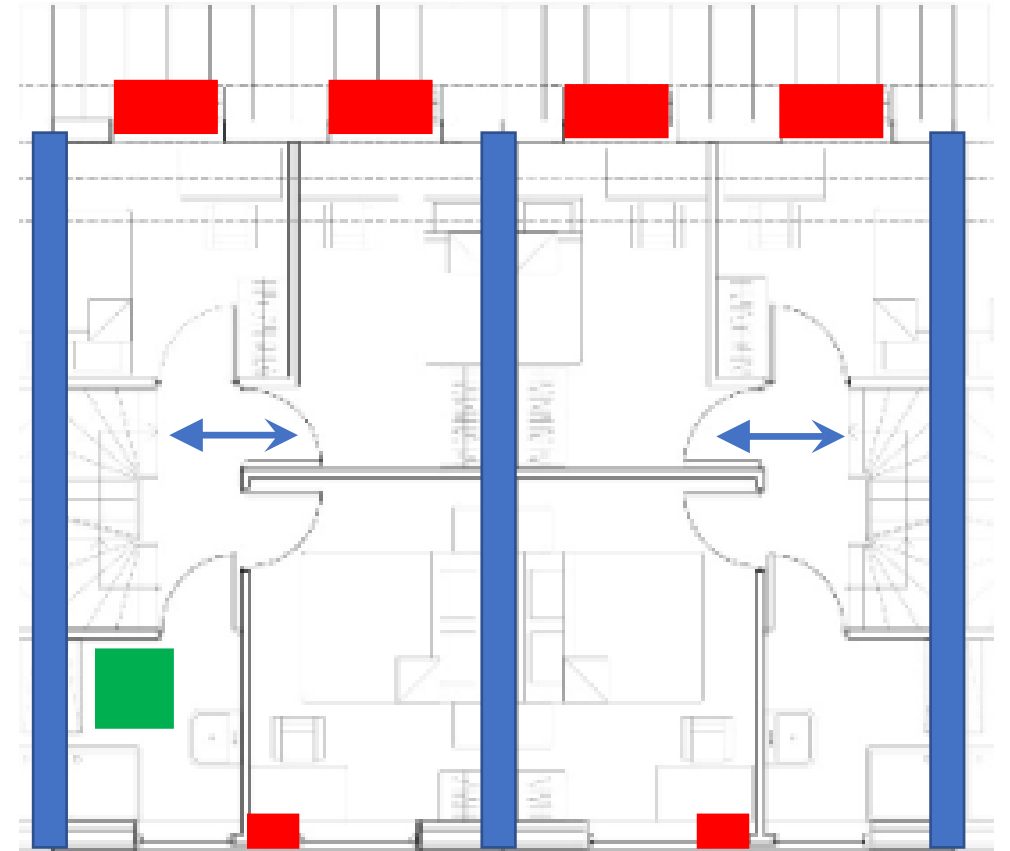


# Second floor

Construction





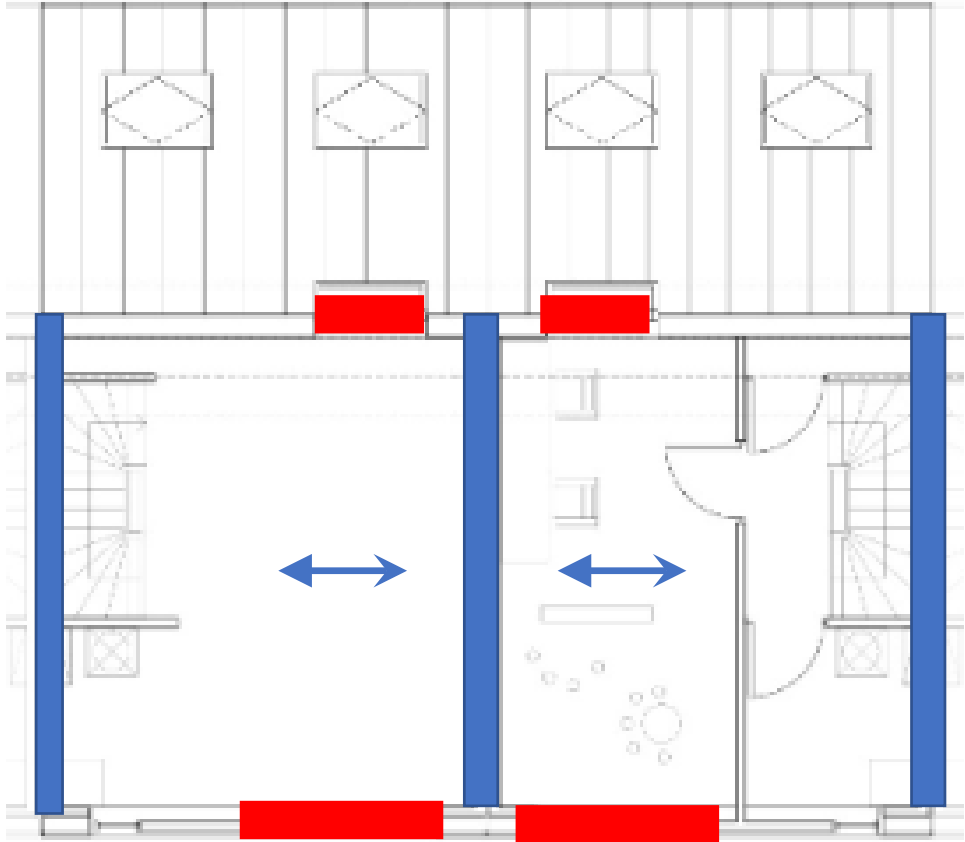
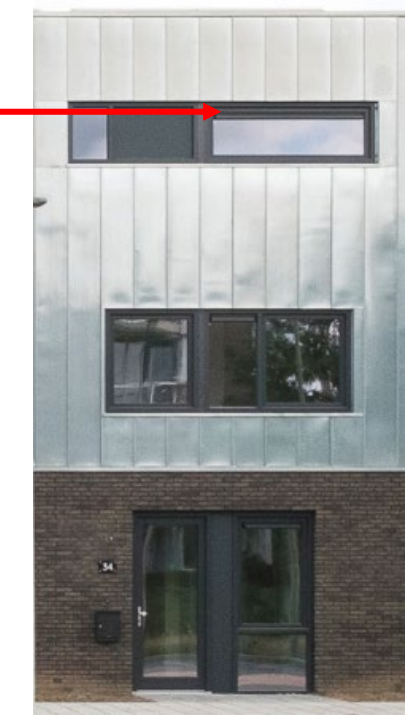
Ventilation



# Third floor

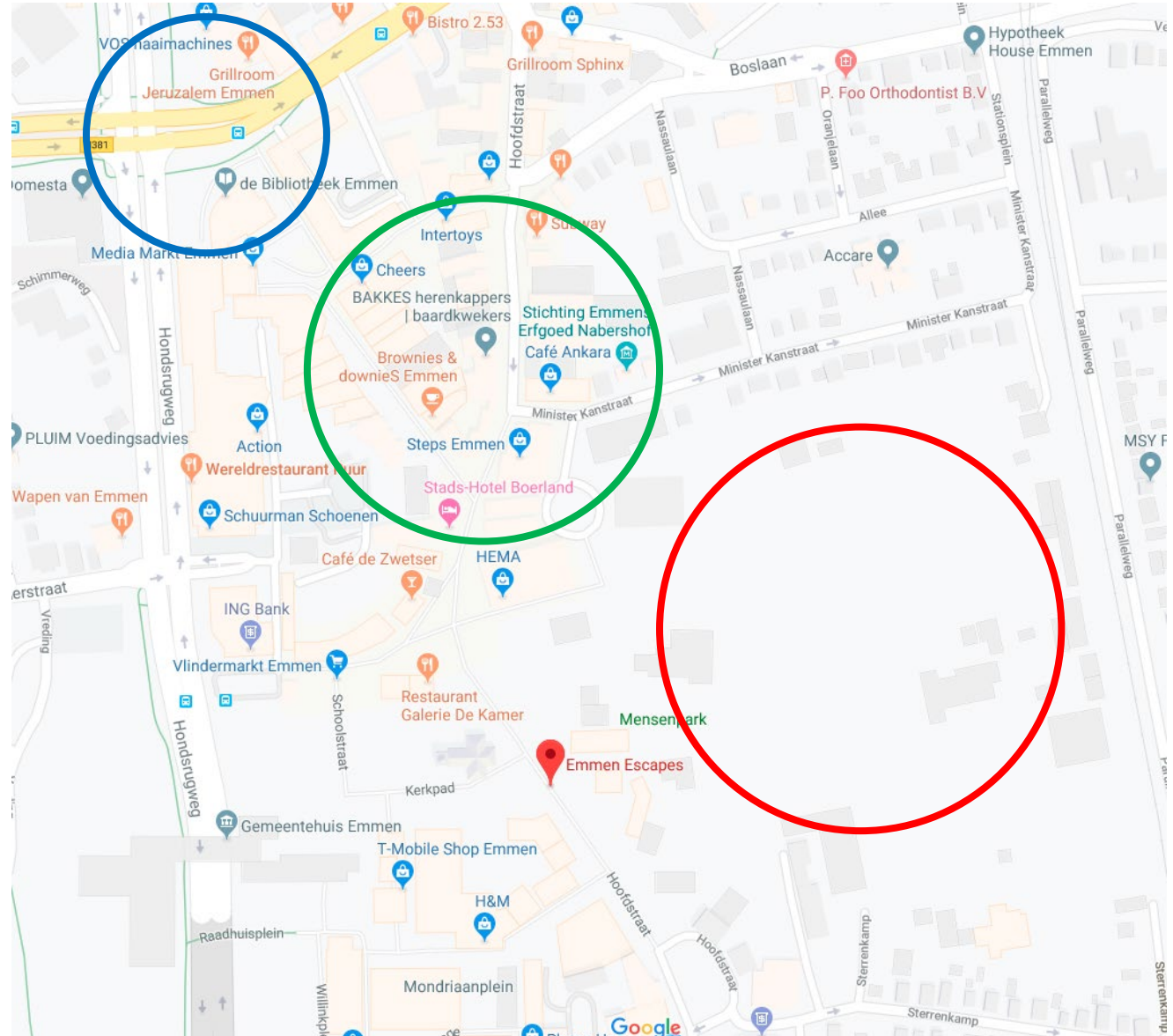
Construction 

Ventilation   




# Parking

14 free parking spaces and 24 buildings



# Materials Identification

PVC windows  
and doors framing



Brick

Aluminium sheet



Siding

# Materials Benefits

Aluminium windows and doors framing →

- Durability
- Energy efficiency
- Eco-balance

Aluminium sheet →

- Durability (high corrosion resistance)
- Versatility
- High strength to weight ratio
- Air tightness
- Easier to work with (versatility and light weight)

Siding →

- Tensile strength
- Electrical and heat resistance
- Sound absorption

Brick →

- Long duration
- Fireproof
- Stand up for inclement weather



# Materials Costs

